



# JOSAM

## truckaligner II

**wireless, computerized  
wheel alignment system for heavy  
vehicles**

**For quick, precise and exact measuring of wheel angles.  
– Choose from either PC version or the  
handheld version!**



*- Shorter adjusting times, faster flow of work and improved profitability -*



# JOSAM truckaligner II

## Why wheel alignment?

Through measuring and adjusting wheel angles on a vehicle, fuel costs and tire wear are reduced. At the same time comfort, security and running characteristics are improved.

This leads to better economy and environment for everyone. It also means that the vehicle travels on the highway without taking up as much place as a vehicle with incorrect alignment would do.

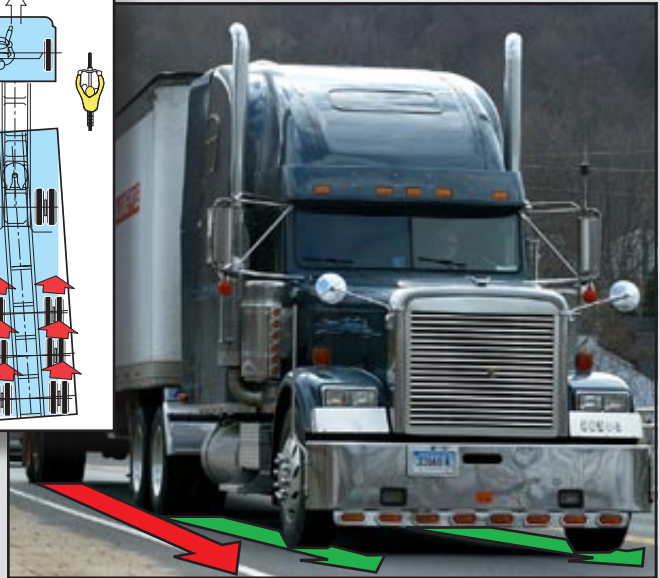
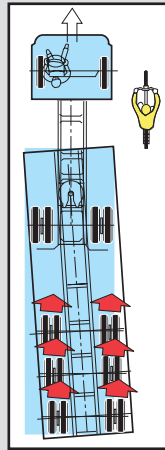
The truckaligner system has been developed for the measurement and adjustment of all wheel angles on heavy vehicles and is now also available in a PC version.

It allows for a high degree of automation so that the technician can quickly and simply measure the vehicle. The quality of the alignment process can be checked step by step.

The system is also adapted for twin steering axles and vehicle combinations like articulated buses.

Together with turnplates and play detectors, the PC/handheld computer, measuring heads, wheel adapter, frame gauges, and target scales constitute a complete set of equipment for advanced and precise wheel alignment.

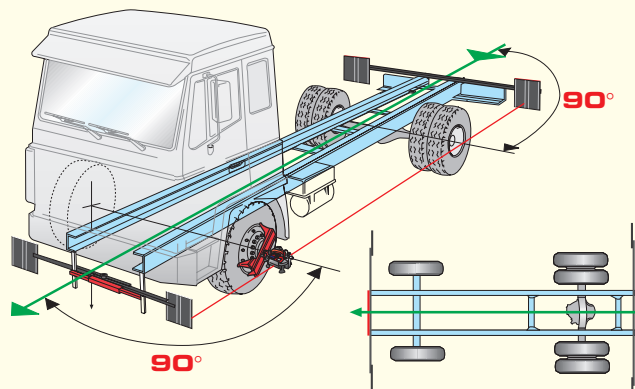
All wireless communication takes place with Bluetooth technology.



*The play detector on the left is a useful accessory for checking that the bushings and bearings are free from excessive play before the wheel alignment.*

## The JOSAM method:

is based on moving out the centerline of the vehicle to its sides with the help of self-centering frame gauges. By using the centerline as a reference, one gets the ENTIRE vehicle to roll straight and safely on the road, including the truck body, frame, wheels and axles.





# JOSAM truckaligner II - PC



The PC console is mobile and comes equipped with a screen that can be raised or lowered to the desired height. It also comes with a storage cabinet for the measuring heads as well as the computer and printer and is completely free from cables if so desired.



The PC version is intended for use in a regular computer with the Windows XP operating system.

In order to optimize all the new possibilities that the Truckaligner II PC version offers, a unique console has been developed. This is completely independent of the need for connection to the main electrical system when the battery-driven version is selected.

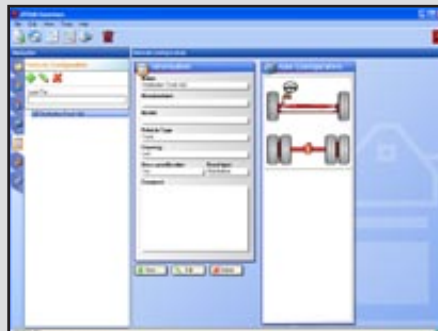
Remote control is available for those who want to operate the system from a distance in the pit or in the truck cab.

## Functions unique for the PC version

It now comes with a completely new database management system and expanded order storage. This function, called the **JOSAM homebase**, makes it very simple for the user to create orders, take measurements and make reports. In the actual measuring part of the system, the **JOSAM truckaligner II**, there is the possibility of measuring wheel angles in a well-thought out flow of information and work on the basis of the limit values recommended by the manufacturers.



The JOSAM homebase with three quick choices adapted for the user: **“Quick start”**, which takes you directly into the measuring process, **“Print”** for printing out the results or **“New Order”** where you can enter the customer, vehicle specifications etc.



A vehicle specification. In this case it is a left-steered 4X2 distribution vehicle. The functions make it possible for the operator to be guided through the measuring and adjustment process.



A complete alignment of the front axle. The tolerances are entered for camber, caster and total toe. The values are shown in green or red depending on whether they are inside or outside the limit values.

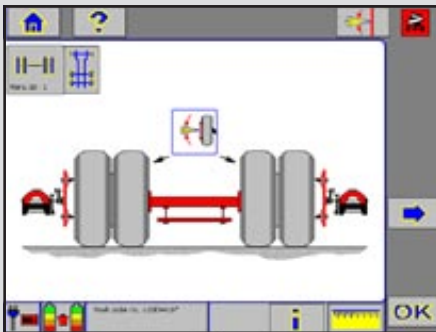


# JOSAM truckaligner II - handheld

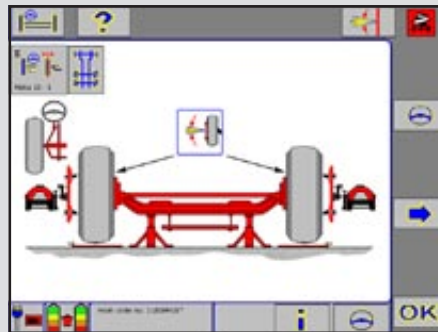
The handheld computer version is based on the Windows CE operating system and is equipped with an 8 inch LCD screen for easy reading.

This portable computer communicates with the measuring heads without the use of cables and a keyboard and printer can be added via USB connections. The powerful, rechargeable battery provides an operating time of more than 8 hours.

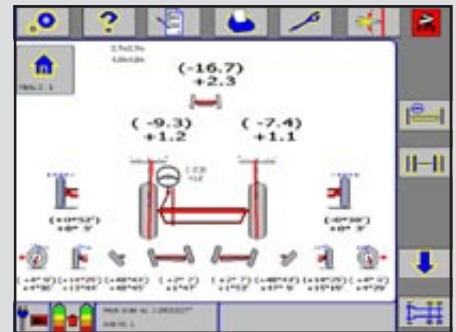
The handheld computer is specially designed for a tough workshop environment and can be carried around or used inside the vehicle. It is ideal for mobile measuring or in the service pit.



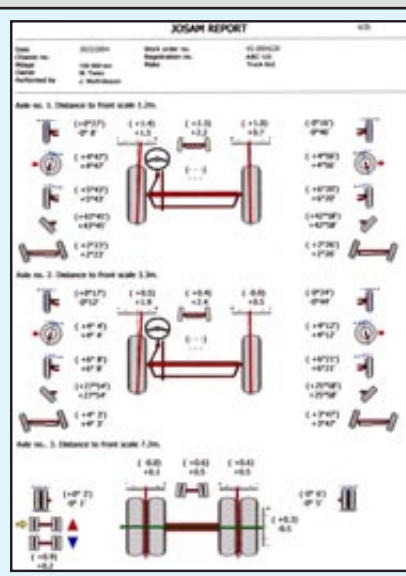
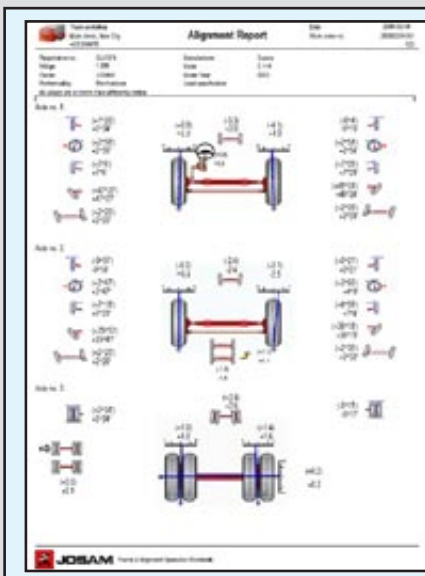
A non-steering axle. The icons indicate which of the buttons that can be activated and a help menu is always easily accessible.



A steering axle. The pictures and symbols inform the user what he should do and where he is in the program.



The measuring of the steering axle is performed by choosing the wheel angles which are to be measured. The result is shown "before adjustment" in the parentheses.



## Colour printouts

The measuring results before and after adjustments are written out axle by axle. Toe and out of square are depicted graphically.

Any measuring and adjustment of the double steering front axles as well as parallelism between the fixed axles are portrayed.

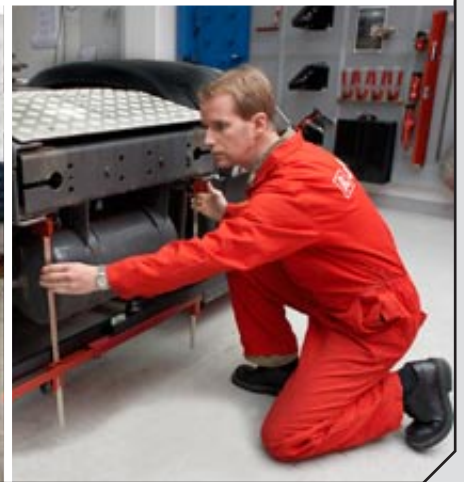
No preconfiguration needs to be performed and up to sixteen axles in a row can be measured.

In the PC version the limit values are presented if these are utilized.



# JOSAM truckaligner II - advantages

- ✗ All the wheel angles can be measured without reference points on the floor
- ✗ Self-instructing menu system with help functions
- ✗ Automatic compensation for an uneven floor or non-level axle with an electronic level
- ✗ Quick readouts of results during adjusting and measuring process
- ✗ Battery-operated units which have wireless communication gives added flexibility
- ✗ Graphic as well as text-based depiction and printout of all wheel angles before and during adjustments
- ✗ A special program for twin steer axles and articulated buses



The PC adapted version, for those of you who desire to measure with a standard computer at the same time as you administer the measuring process and obtain limit values. The screen can be adapted upon request and the mobile console gives you the freedom to work wirelessly via a remote control.

The handheld alternative, for those of you who would like to be more mobile, work in a service pit or in work in tough environments.

There are also a number of accessories which we recommend for measuring and storage. Contact us or your nearest dealer for more information.

The equipment is approved and recommended by most truck and bus manufacturers.



# JOSAM truckaligner II



*During the 1970's, JOSAM was responsible for the pioneering technology of using lasers to help measure wheel angles with great precision. Today the wheel angles are measured to within 0.01 degrees exactness.*

*The precision of the laser beam is suited for the measuring of heavy vehicles where the wheelbase can vary by large amounts, sometimes by up to 8 meters.*

*The laser equipment is being steadily improved and today the JOSAM truckaligner II is one of the most sophisticated measuring systems to be found on the market.*

*This not only makes the measuring process more effective, it makes it easier for the technician to always achieve the correct result – quality control becomes a part of the work.*

## Technical data:

Laser:	Class 2	Camber:	-5° - +10°
Operational time:	> 8 hours	Caster:	±20°
Charging time:	5 hours for the measuring heads. 10 hours for the handheld	KPI:	±20°
Capacity:	200 vehicles for the handheld, PC version unlimited. 16 axles per measurement for both.	Max. turn:	60°

Precision: 0,25 mm/m for toe and 3' for camber.



Representative:

Manufacturer:



# JOSAM

Box 419 • SE-701 48 ÖREBRO • Sweden  
Phone: +46 19 30 40 00 • Fax +46 19 32 03 16  
E-mail: info@josam.se • Internet: www.josam.se